

DOOR CAMERA/INTERCOM

The Smart Intercom/camera and door chime connects via WiFi to the ECO1 smart App without any wiring required. It is very simple to operate, simply press the external bell button and it rings the indoor chime and also notifies you on your smart phone if you are home or away, it has a talk and listen function and also record capabilities comes complete with indoor chime and external doorbell unit and can also be used to operate the ECO1 Smart lock (see installation instructions for setup procedure).

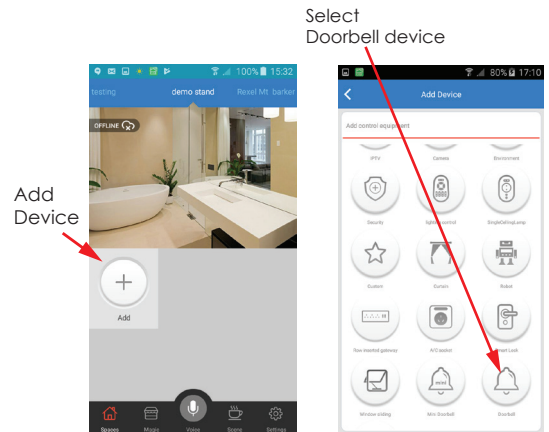
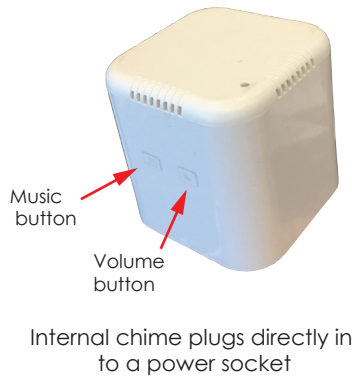
Product Code	Input Voltage	Battery type	Wireless Type	Lens Angle	Pixels	Internal chime
IDB-170-3	6VDC	4 x AA	2.4GHz	170 Degree	3Mp	85VAC - 265VAC
IDB-120-1	6VDC	4 x AA	2.4GHz	120 Degree	1Mp	85VAC - 265VAC



Intercom/camera screen



ECO1 Smart Control App free download control your lighting from anywhere



select add in the ECO1 app and then select the bell device and follow the setup procedure